

St. Louis, Missouri

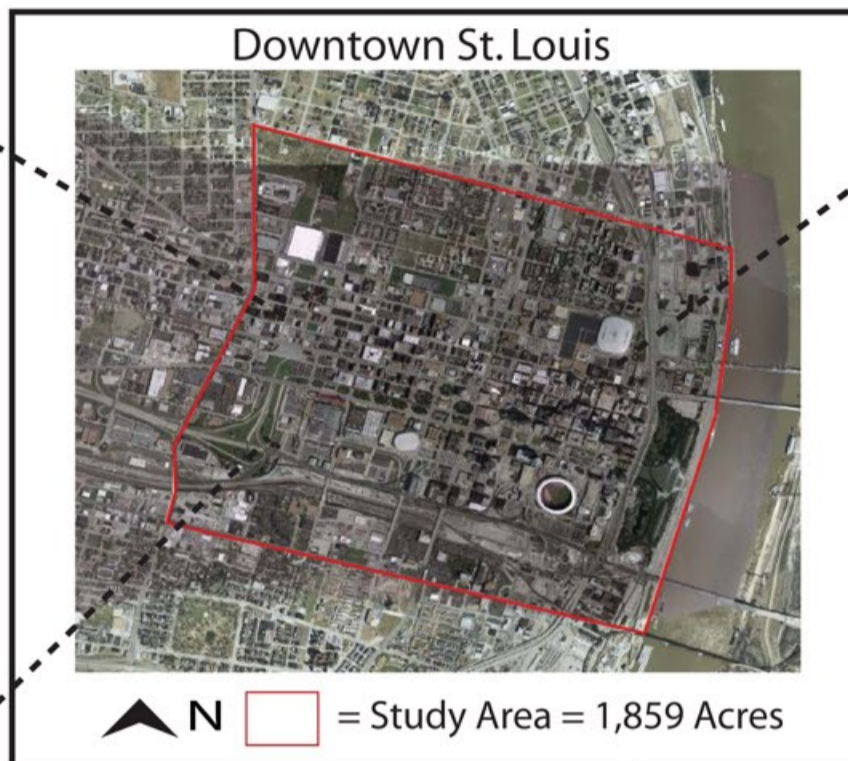
"Striving to Create America's Most Liveable City"



Transportation



- Alternating one-way streets
- The New I-64 Design-Build Project
- Multi-modal Transportation MetroLink & MetroBus
- Parking is very abundant and affordable



Demographics



- Downtown Population: 7,511
- Population Density: 2,585 ppsm
- Total Housing Units: 5,826
 - Owner Occupied: 120 units
 - Renter Occupied: 4,064 units
 - Vacant: 1,642 units
- Median Household Income: \$17,990
- City proper has been losing population for 5 decades

Growth & Development



- Office space vacancy over the last decade 15% - 20%
- High retail vacancy rates
- Over \$3.3 Billion has been invested in downtown since 1999
- At the beginning of a downtown renaissance with multiple residential, civic, and commercial projects underway

Comparison to Denver



- Denver has a higher number of downtown residents
- Denver's downtown residents have a higher median household income as well as a higher level of educational attainment
- Denver has a more evolved mass transit system
- Both cities are seeing a large amount of downtown development

What can Denver learn from St. Louis?

Denver has a more highly educated population base from which to attract business and economic development. Denver's downtown residents also have a much larger median household income. This could be utilized to a greater extent to attract retail and residential development.